

Option for Musical Instruments

Concerto Vibe, 3-piece Congas, and Med. Cabasas

Estimated Budget \$11,520.00

-installation based on installing all of phase 2 together

Part Number	Description	Qty
200203438	CONCERTO VIBES	1
200203440	CONCERTO SPIN CABASAS MEDIUM	1
200203443	CONCERTO 3-CONGAS	1



Inclusive Revolution Spinner

Estimated Budget \$7,135.00

-installation based on installing all of phase 2 together



Part Number
200203413

Description
REVOLUTION INCLUSIVE SPINNER

Qty
1



Four Bay Max Play Swing Set

Estimated Budget \$10,529.00

7 belt swing seats and 1 inclusive swing seat

-installation based on installing all of phase 2 together



Part Number	Description	Qty
200202202	MAXPLAY 8' STANDARD BEAM	1
200202204	MAXPLAY 8' ADD-ON STANDARD BEAM	3
200202835	ASSY BELT SEAT F/8' SWING W/CHAIN	7
200203433	INCLUSIVE SWING SEAT W/CHAINS 8'	1



Option for Independent Climber

3 Spoke Infinity Climber

Estimated Budget \$6,858.00

-installation based on installing all of phase 2 together

Part Number
200200178

Description
INFINITY CLIMBER TRIPPLE

Qty
1



Multi-User Basket Swing



Multiuser Arch Swing

Estimated Budget \$5,486.00

-installation based on installing all of phase 2 together

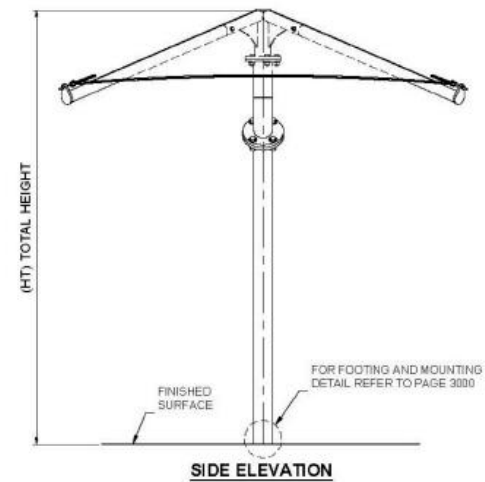
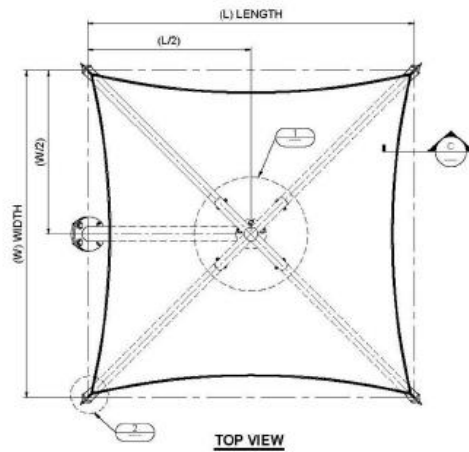
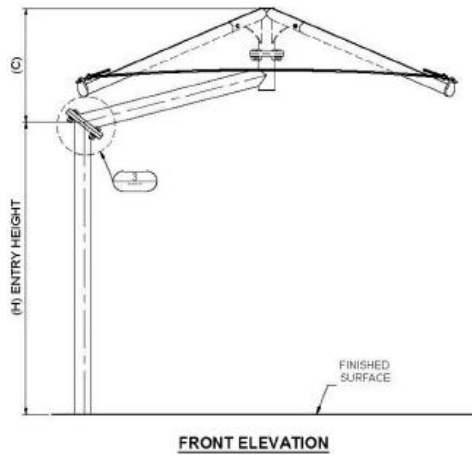
The addition of the Multiuser Arch swing will result in an increased Surfacing area, and it will increase the surfacing costs.



12' x 12' Cantilevered Pyramid Shade

Estimated Budget \$12,145.00

-installation based on installing all of phase 2 together

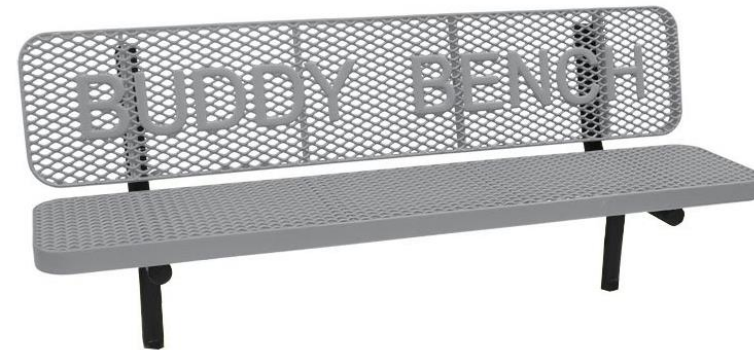




(1) 4' Square picnic table with 4 seats & (1) ADA 4' x 5' picnic table with 3 seats.

Estimated Budget \$3,380.00

-installation based on installing all of phase 2 together



(1) 6' Expanded Metal Buddy Bench

Estimated Budget \$1,245.00

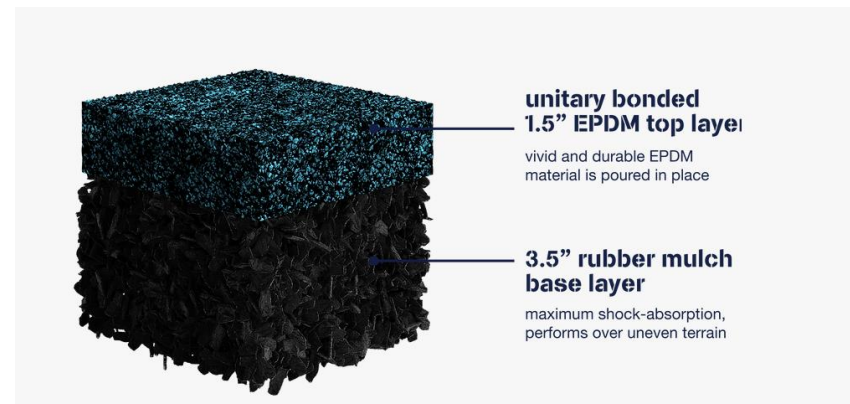
-installation based on installing all of phase 2 together



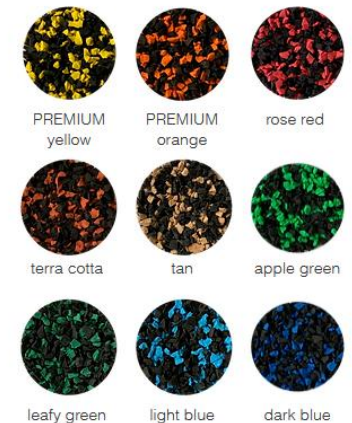
1.5" Thick Top Layer only of Rubber Bond Unitary Surfacing

Estimated Budget \$173,100.00

- Does not include the loose rubber base.
- Pricing includes both areas totaling 8,075 square feet
- Pricing includes preparation and the standard 50% color and 50% black topcoat.
- Unitary rubber surfacing requires some sort of containment curb. The best option is a concrete curb, but a treated timber or plastic timber can work.



available colors:



If the Multiuse Arch Swing is added there will be an additional 612 ft² that will result in approximately **\$13,115.00 additional in Rubber Bond Costs**